

12

Active River Areas

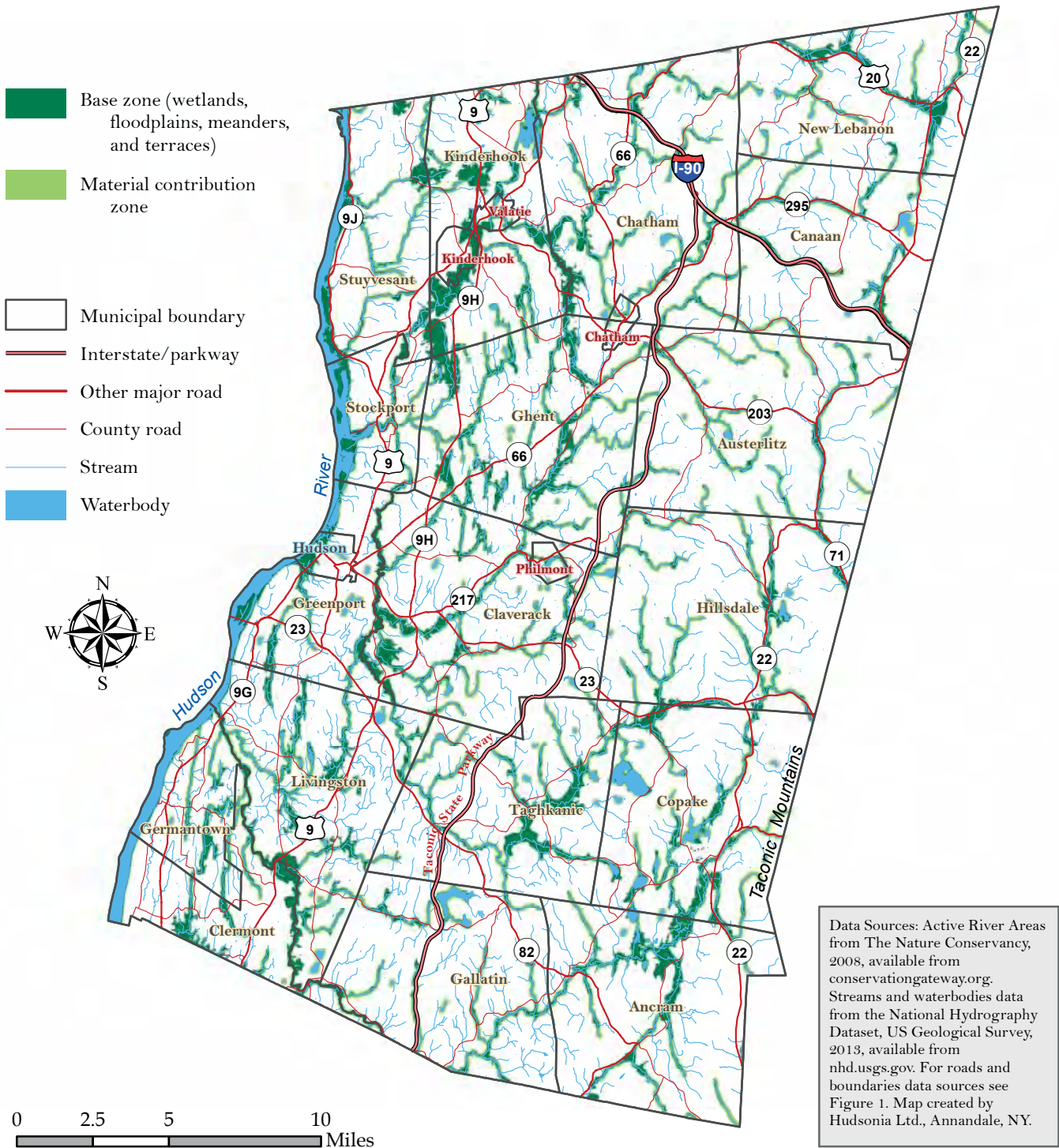


Figure 12. Active River Areas (ARAs) in Columbia County, New York. "Base zone" includes wetlands, floodplains, meanders, and terraces near streams and rivers. "Material contribution zone" includes areas near the base zone or near headwater streams that contribute organic and inorganic material to the stream and river system (Smith et al. 2008). Small streams, though ecologically important, were not included in the ARA analysis. Columbia County Natural Resources Inventory, 2018.