

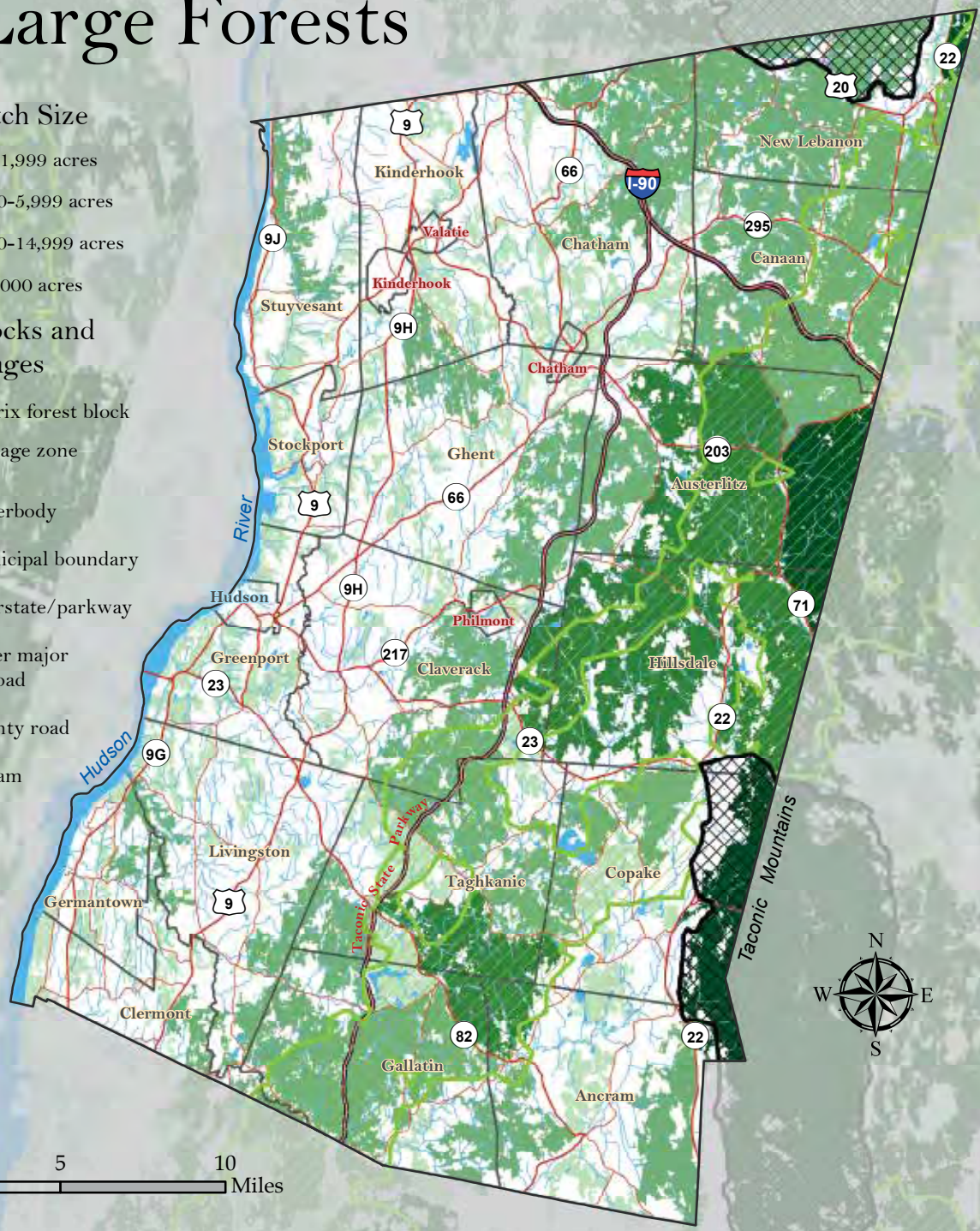
17 Large Forests

Forest Patch Size

- 200-1,999 acres
- 2,000-5,999 acres
- 6,000-14,999 acres
- >15,000 acres

Forest Blocks and Linkages

- Matrix forest block
- Linkage zone
- Waterbody
- Municipal boundary
- Interstate/parkway
- Other major road
- County road
- Stream



Data Sources: Contiguous forest patches of over 200 acres, created by the NYS Department of Environmental Conservation (NYSDEC) Hudson River Estuary Program in 2011. Forest cover derived from the Coastal Change Analysis Program (2006) land cover data, and forest patches separated using buffer zones along major roads. For more information, contact the Hudson River Estuary Program at 845-256-3016. Matrix forest blocks and linkages data developed by the New York Natural Heritage Program and The Nature Conservancy (TNC). TNC Eastern Conservation Science, 2006, updated 2012, available from gis.ny.gov. Waterbodies data from the National Hydrography Dataset, US Geological Survey, 2013, available from nhd.usgs.gov. For road and boundary data sources see Figure 1. Map created by Hudsonia Ltd., Annandale, NY.

Figure 17. Large patches of contiguous forest in Columbia County, New York. Columbia County Natural Resources Inventory, 2018.