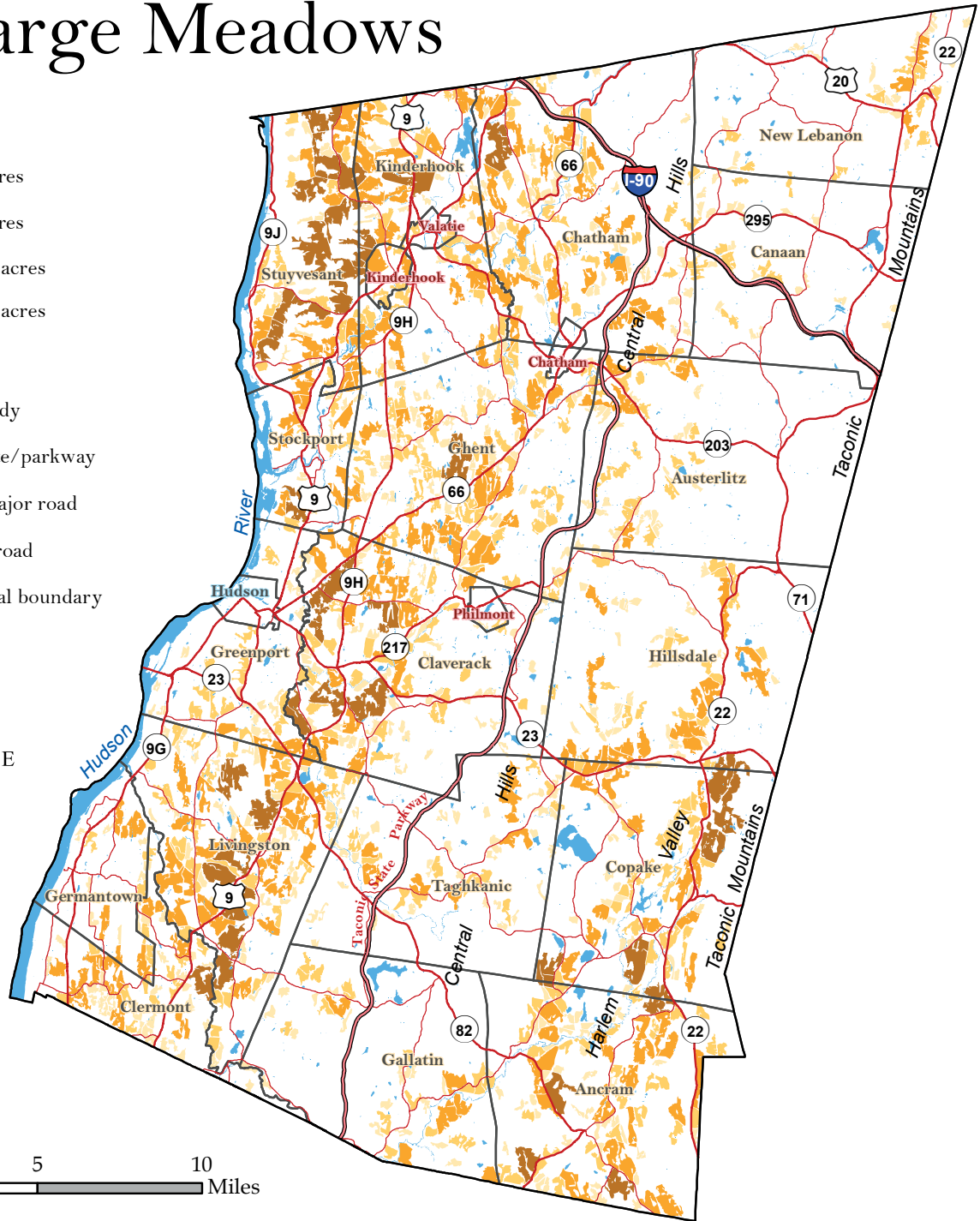


19 Large Meadows

- 25-49 acres
- 50-99 acres
- 100-249 acres
- 250-600 acres

- Waterbody
- Interstate/parkway
- Other major road
- County road
- Municipal boundary



Data Sources: Hudsonia extracted "pasture/hay," "cultivated crops," and "wet meadows/shrub marsh" categories from the "Northeast Ecological Systems" dataset (North Atlantic Landscape Conservation Cooperative, 2014, available from nalcc.databasin.org; including data from The Nature Conservancy's Northeast Terrestrial Wildlife Habitat Classification System, the National Land Cover Database 2006, National Hydrography dataset, and National Wetlands Inventory; all mapping was done remotely, without field verification). These categories were merged and "exploded" and areas of resulting polygons were calculated. Waterbodies from the National Hydrography Dataset, US Geological Survey, 2013, available from nhd.usgs.gov. For roads and boundaries data sources, see Figure 1. Map created by Hudsonia Ltd., Annandale, NY.

Figure 19. Contiguous large meadows (including croplands and open wetlands) in Columbia County, New York. Patch size does not take into account fencerows, tree lines, or other fragmenting features that can reduce habitat quality for grassland breeding birds. Columbia County Natural Resources Inventory, 2018.