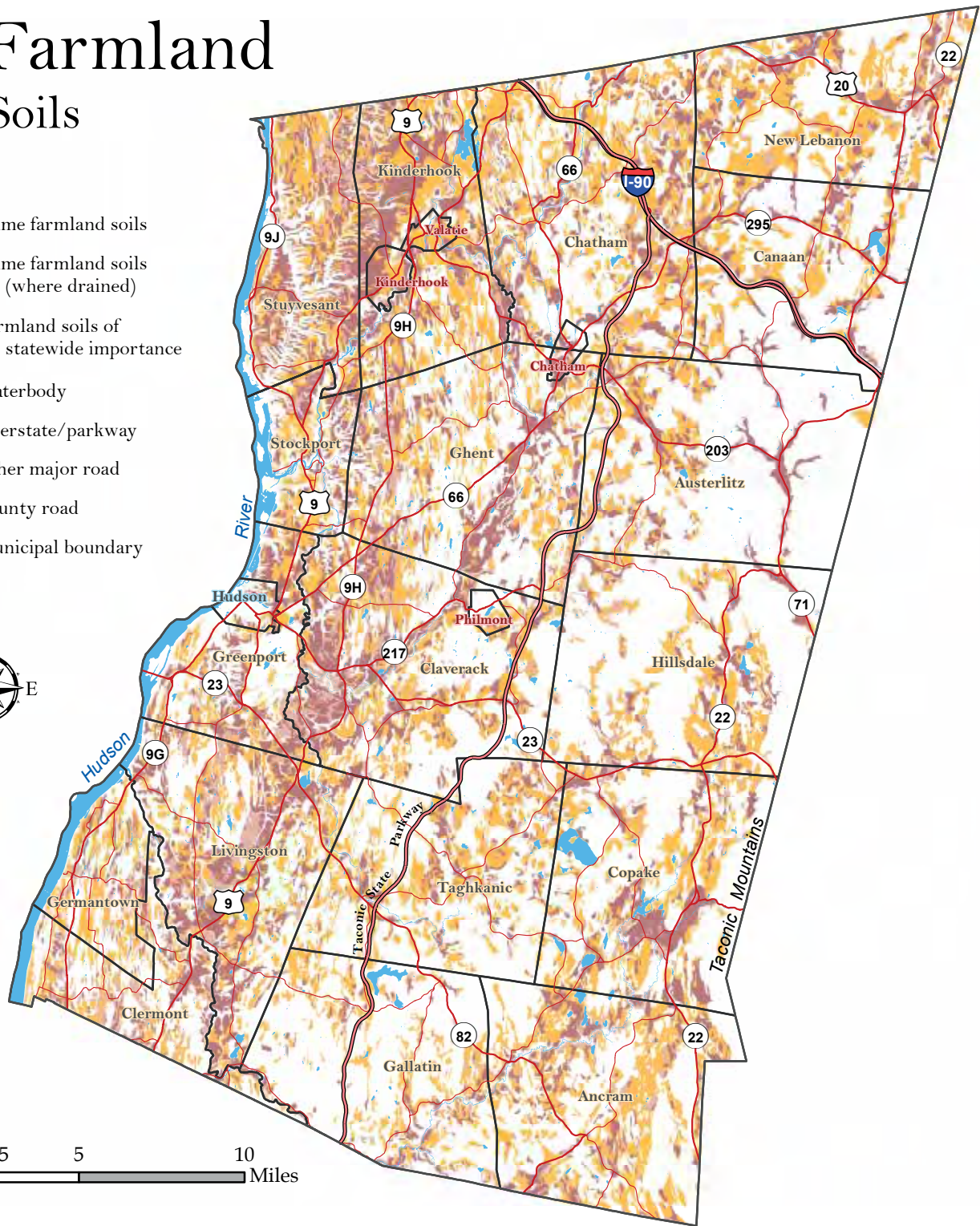


27 Farmland Soils

- Prime farmland soils
- Prime farmland soils (where drained)
- Farmland soils of statewide importance
- Waterbody
- Interstate/parkway
- Other major road
- County road
- Municipal boundary



Data Sources: Prime farmland soils and soils of statewide importance are classified as such in the Natural Resources Conservation Service (NRCS) soil survey. Soil Survey Staff, NRCS, US Department of Agriculture. Soil Survey Geographic (SSURGO) Database for Columbia County, NY, available from nrcs.usda.gov. Waterbodies data from the National Hydrography Dataset, US Geological Survey, 2013, available from nhd.usgs.gov. For roads and boundaries data sources see Figure 1. Map created by Hudsonia Ltd., Annandale, NY.

Figure 27. Best farmland soils of Columbia County, New York. Columbia County Natural Resources Inventory, 2018.