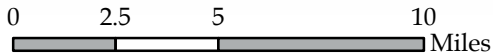
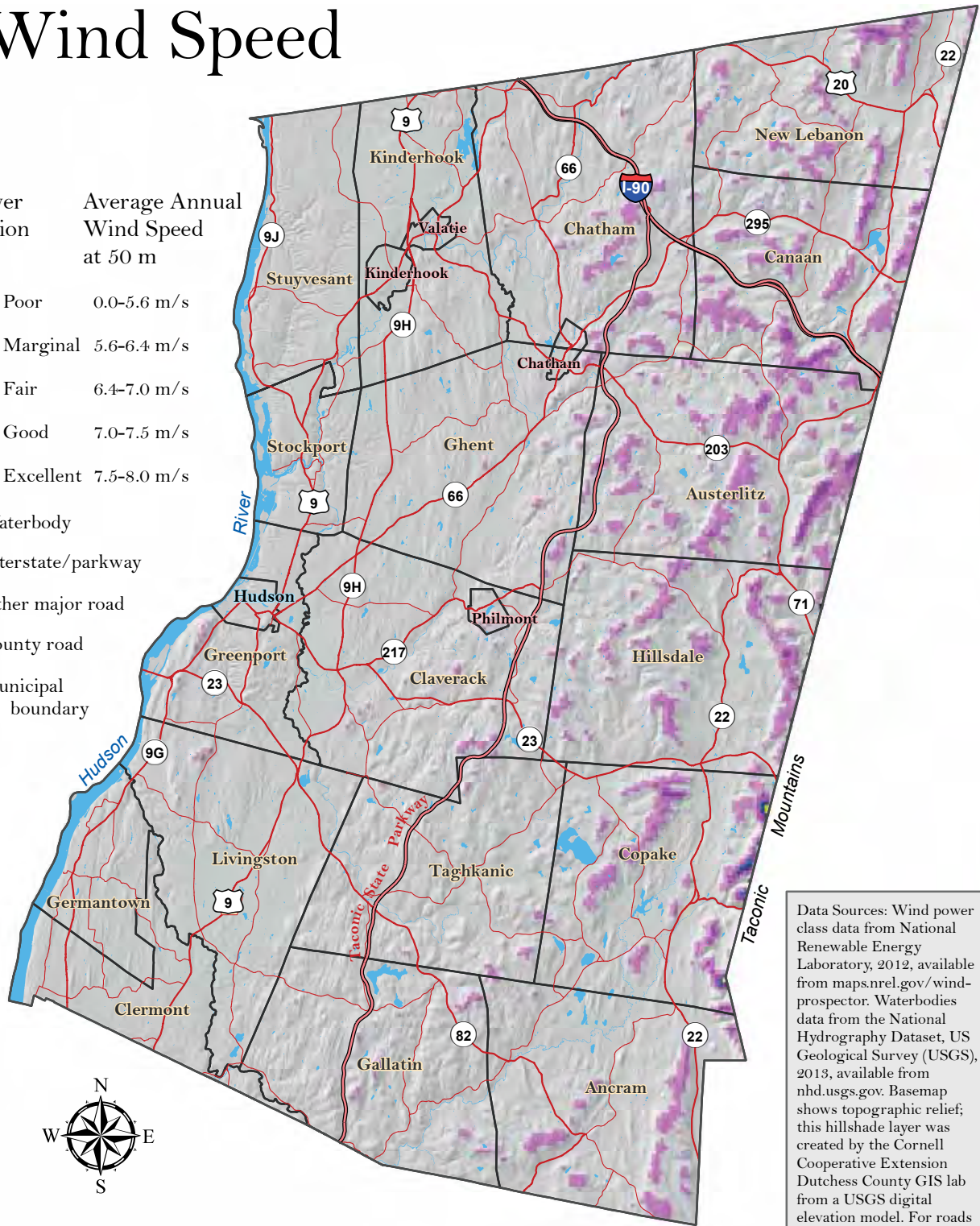


28 Wind Speed

Wind Power Classification

Average Annual Wind Speed at 50 m

- 1 - Poor 0.0-5.6 m/s
- 2 - Marginal 5.6-6.4 m/s
- 3 - Fair 6.4-7.0 m/s
- 4 - Good 7.0-7.5 m/s
- 5 - Excellent 7.5-8.0 m/s
- Waterbody
- Interstate/parkway
- Other major road
- County road
- Municipal boundary



Data Sources: Wind power class data from National Renewable Energy Laboratory, 2012, available from maps.nrel.gov/wind-prospector. Waterbodies data from the National Hydrography Dataset, US Geological Survey (USGS), 2013, available from nhd.usgs.gov. Basemap shows topographic relief; this hillshade layer was created by the Cornell Cooperative Extension Dutchess County GIS lab from a USGS digital elevation model. For roads and municipalities data sources see Figure 1. Map created by Hudsonia Ltd., Annandale, NY.

Figure 28. Modeled average annual wind speed in Columbia County, New York. Wind power classification is rated for economically viable commercial wind power. Actual wind conditions vary greatly over small areas and must be analyzed for suitability on-site. Columbia County Natural Resources Inventory, 2018.