

37 Permeability

Local connectedness
(compared to regional average)

- Above average
(1 to 2 standard deviations)
- Slightly above average
(0.5 to 1 standard deviations)
- Average
(-0.5 to 0.5 standard deviations)
- Slightly below average
(-0.5 to -1 standard deviations)
- Below average
(-1 to -2 standard deviations)

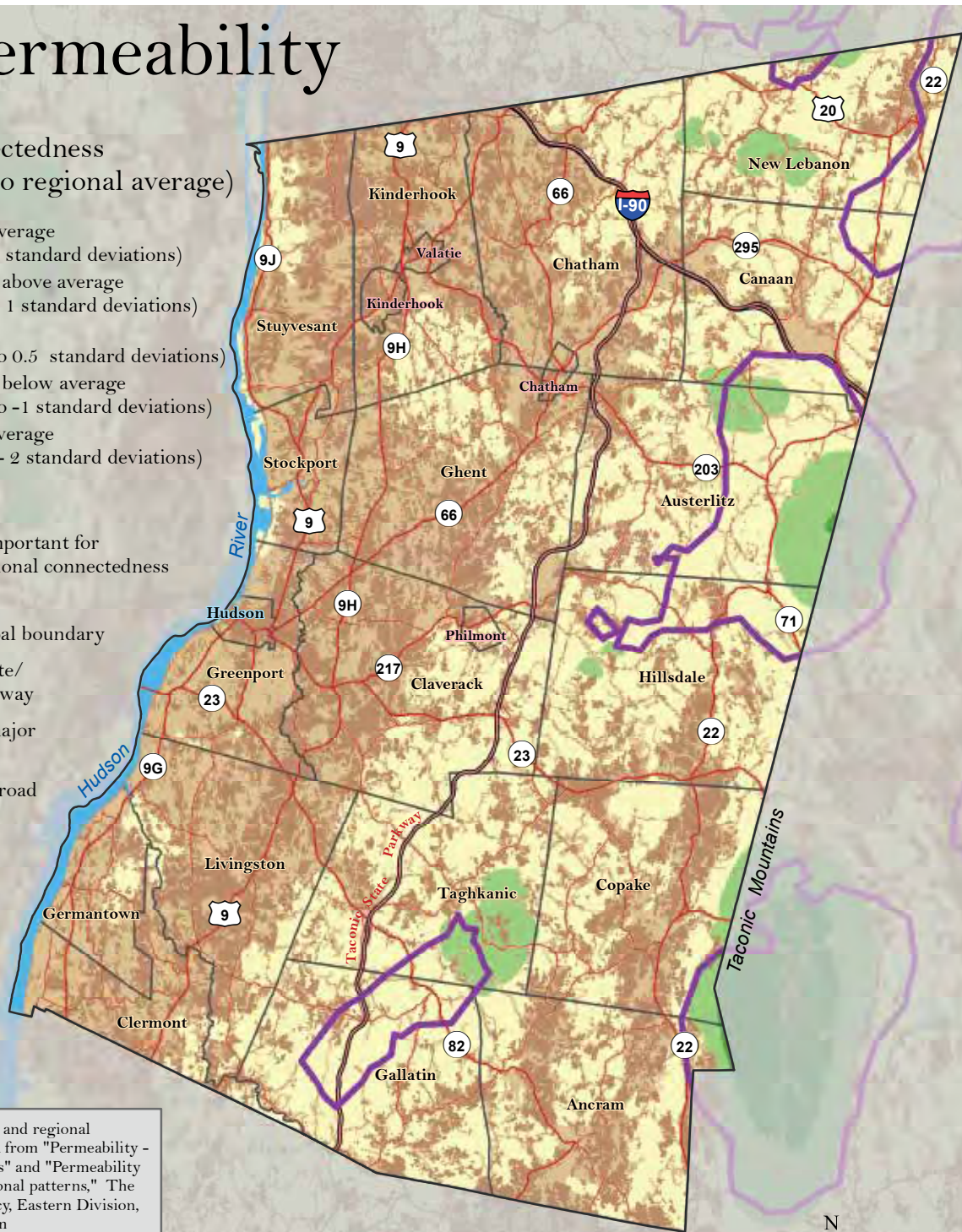
Area important for regional connectedness

Municipal boundary

Interstate/
parkway

Other major
road

County road



Data Source: Local and regional connectedness data from "Permeability - local connectedness" and "Permeability regional flow: regional patterns," The Nature Conservancy, Eastern Division, 2012, available from conservationgateway.org. For road and boundary data sources see Figure 1. Map created by Hudsonia Ltd., Annandale, NY.

Figure 37. Permeability, the ability of a landscape to sustain ecological processes and allow movement or flow of organisms, in Columbia County, New York. Local connectedness describes the continuity of natural cover at the scale of a few kilometers. Areas important for regional connectedness are those where flow across a wider regional network is narrowly concentrated. Columbia County Natural Resources Inventory, 2018.