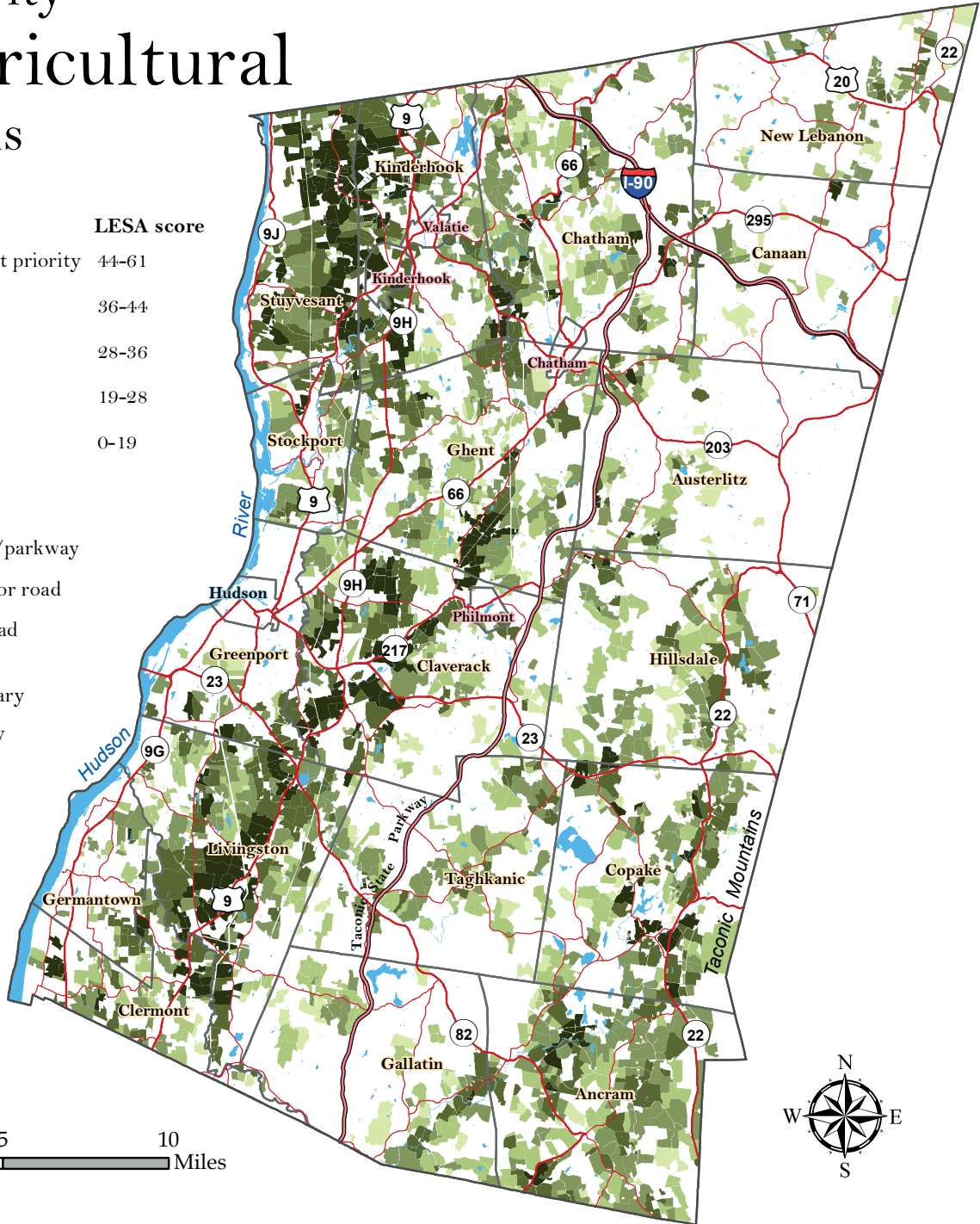
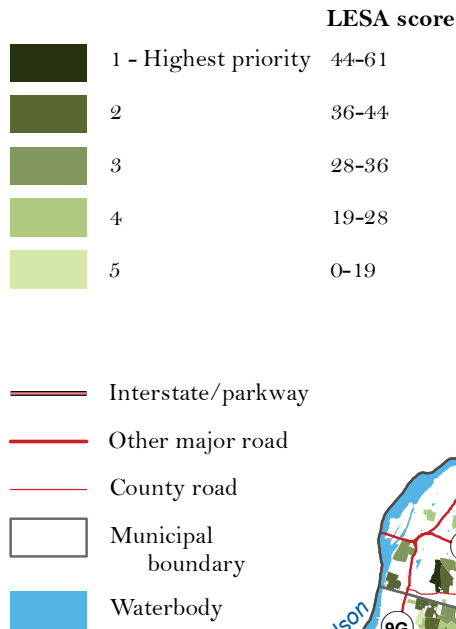


# 39 Priority Agricultural Lands



Data Sources: Priority agricultural lands from a Land Evaluation and Site Assessment (LESA) adapted for Columbia County by the County Agricultural and Farmland Protection Board and mapped by Don Meltz Planning and GIS. Original LESA created by Natural Resources Conservation Service. Assessment criteria include soil type, commitment to farming, long-term viability, development pressure, and open space (including scenic, historic, and natural resource) value. Waterbodies data from the National Hydrography Dataset, US Geological Survey, 2013, available from [nhd.usgs.gov](http://nhd.usgs.gov). For roads and boundaries data sources see Figure 1. Map created by Hudsonia Ltd., Amandale, NY.

Figure 39. Priority agricultural lands in Columbia County, New York. Lands identified through a Land Evaluation and Site Assessment System (LESA) (see text). Columbia County Natural Resources Inventory, 2018.